



Oil-injected Screw Compressor – 60Hz

Fixed Speed Compressor
CPM 5.5-50, CPD 40-50 G
Variable Speed Compressor
CPMV 10-50 PM,
CPVS 10-50 PM

About Chicago Pneumatic

Since 1901, the **Chicago Pneumatic** name has represented reliability and attention to customer needs, as a global manufacturer of power tools, air compressors, generators, light towers, and hydraulic equipment for professional and industrial applications. It represents products that are engineered for high performance. In addition to pioneering design, high-impact technology and durability, **Chicago Pneumatic** means **customer value**.

Our people start every single day with a passion to research, develop, manufacture and deliver new products that are meant to meet your needs not only today, but tomorrow as well.

All this has come together because we have consistently practiced our brand promise:

People. Passion. Performance.



Define your needs, our broad offers does the rest

Going for our extensive offer of oil-injected screw compressors below 37kW, you choose for **reliable performance, trustworthy technology** and **friendly operation**. These ranges are also suitable for more demanding applications and can be deployed in harsh working conditions.

Fixed speed



Noise level		63-73 dB(A)
FAD		9-110 l/s
Power		5.5-50Hp/4-37kW
Pressure		7-10 bar
Weight		152-846kg

User benefits

- Easy and user-friendly operation
- Robust design, ready to operate in hard working conditions
- Fast and easy maintenance, all consumables are easy to reach and maintain

Variable speed



Noise level		69-75 dB(A)
FAD		3.3-116 l/s
Power		10-50Hp/7.5-37kW
Pressure		Max 1.3 bar
Weight		195-495kg

User benefits

- Inverter technology perfectly matching the air flow with the air demand saving energy costs up to 30% compared to fixed speed compressor
- Highly efficient element ensures lower power loss and longer term performance compared to our previous generation compressors
- User-friendly controller for full control

CPM & CPD Series 5.5-50Hp/4-37kW

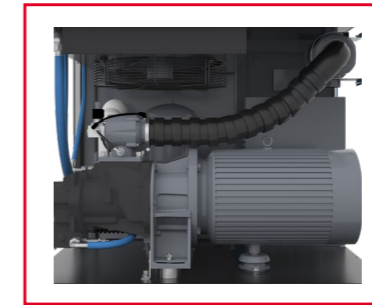
Technical data

Model	Pressure		Motor		Capacity*		Noise	Weight	Connection	Dimension
	Mpa	psig	hp	kW	l/s	cfm	dB(A)	KG	G	LxWxH(mm)
CPM 5.5	0.8	115	5.5	4	10	20	63	152	1/2	650x650x890
	1.0	145			9	18				
CPM 7.5	0.8	115	7.5	5.5	14	29	63	166	1/2	650x650x890
	1.0	145			11	24				
CPM 10	0.8	115	10	7.5	19	40	63	175	1/2	650x650x890
	1.0	145			15	32				
CPM 15	0.7	100	15	11	29	62	69	295	3/4	850x790x1260
	0.8	115			29	62				
	1.0	145			24	50				
CPM 20	0.7	100	20	15	38	80	71	345	3/4	850x790x1260
	0.8	115			38	80				
	1.0	145			32	67				
CPM 25	0.7	100	25	18.5	49	104	73	370	1	850x790x1260
	0.8	115			49	104				
	1.0	145			43	91				
CPM 30	0.7	100	30	22	63	133	71	440	1	1250x850x1000
	0.8	115			60	126				
	1.0	145			55	116				
CPM 40	0.7	100	40	30	89	189	72	565	1 1/2	1430x950x1200
	0.8	115			83	177				
	1.0	145			74	157				
CPM 50	0.7	100	50	37	110	233	72	620	1 1/2	1430x950x1200
	0.8	115			103	219				
	1.0	145			94	199				
CPD 40 G	0.7	100	40	30	87	185	69	821	1 1/2	1723x980x1600
	0.8	115			87	184				
	1.0	145			77	164				
CPD 50 G	0.7	100	50	37	106	224	70	846	1 1/2	1723x980x1600
	0.8	115			106	224				
	1.0	145			96	203				

Model	Pressure		Motor		Capacity*		Noise	Weight	Connection	Dimension
	Mpa	psig	hp	kW	l/s	cfm	dB(A)	KG	G	LxWxH(mm)
CPM5.5 TMDD	0.8	116	5.5	4	10	20	63	316	1/2	1547x650x1473
	1.0	145			9	18				
CPM7.5 TMDD	0.8	116	7.5	5.5	14	29	63	330	1/2	1547x650x1474
	1.0	145			11	24				
CPM10 TMDD	0.8	116	10	7.5	19	40	63	368	1/2	1547x650x1475
	1.0	145			15	32				
CPM15 TMDD	0.7	102	15	11	29	62	71	493	1	1525x818x1789
	0.8	116			29	62				
	1.0	145			23	49				
CPM20 TMDD	0.7	102	20	15	37	78	71	568	1	1569x818x1789
	0.8	116			37	78				
	1.0	145			34	71				
CPM25 TMDD	0.7	102	25	18.5	51	108	73	595	1	1569x818x1789
	0.8	116			51	107				
	1.0	145			41	87				

* Unit performance measured according to ISO 1217, Annex C, latest edition and ISO 2151.
 *220V, 380V available

Easy maintenance



Extra reliability



- **Easy and fast maintenance**
Easy maintenance and very low pressure drop thanks to the new oil separation
- **Chicago Pneumatic in-house design element**
Guarantees stable compressor air supply and efficient operation
- **ES4000T controller**
4.3' HD Graphic touch controller integrated with intelligent connectivity

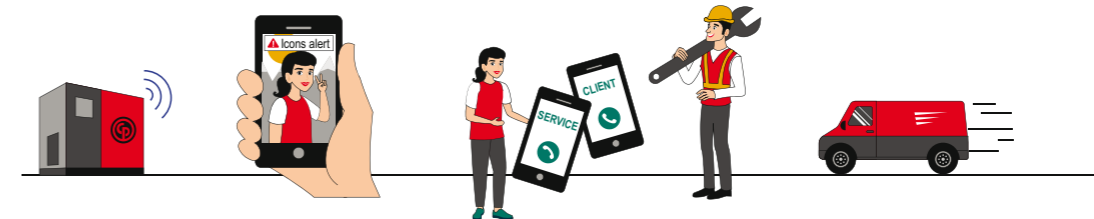
- Offer a simple plug-and-play solution
- Lower noises <64dB(A) for your silent working environment
- Offers extra reliability with belt driven

Complete your compressed air installation with an ICONS plan

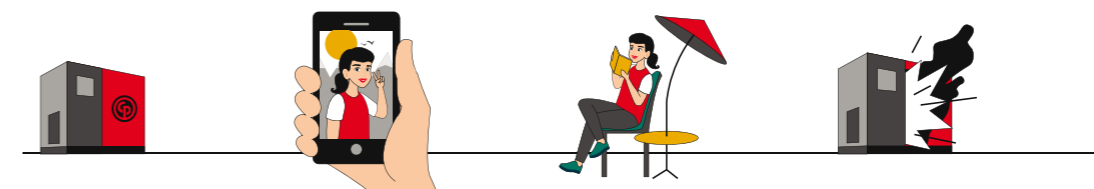
What if your compressor needs service or an immediate intervention?
 With an ICONS plan, you get an alert from your controller delivered straight to your computer, tablet or smartphone. Wherever you are, you can take immediate action and reduce the risk of downtime and other costs.



With connectivity



Without connectivity



CPMV & CPVS series

10-50Hp/7.5-37kW



The performance comes with the technology

The CPMV and CPVS screw compressors are up to 35% more energy efficient than an equivalent power sized piston compressor. The CPVS is also designed to work continuously if needed, this allows you to get 100% performance, 24 hours a day, from your equipment without fearing a single fail.



1 Inverter

Market proven design specially for air compressor regulation, brings the most matched air supply with minimum energy consumption



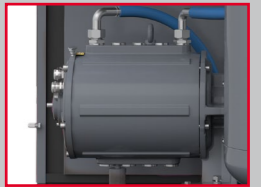
2 ES4000T controller

A unique touch control unit, professionally programmed for intelligent monitoring and connectivity



3 Drive train

Patented oil cooled permanent magnetic drive train designed to give long term and reliable service



4 Simple maintenance

Quick access to service. Suction cooling air flow supports visual inspection with open-door



Technical data

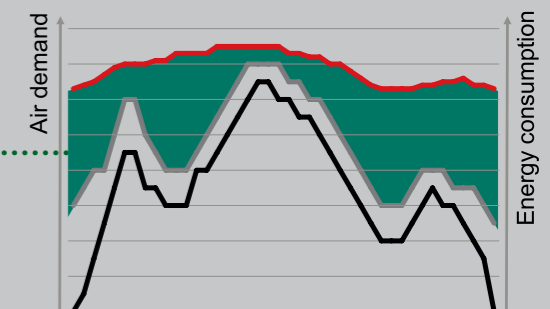
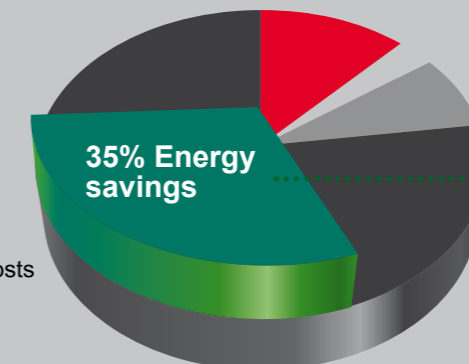
Model												
	Pressure	hp	kW	l/s	cfm	Noise	Weight	Connection	Dimension			
	Mpa					dB(A)	KG	G	LxWxH(mm)			
CPMV 10 PM	0.7-0.85 1.0-1.05	10	7.5	8.2-21 7.2-18	17-44 15-39	70	195	3/4	914x850x1050			
CPMV 15 PM	0.7-0.85 1.0-1.05	15	11	9.1-32 7.2-27	19-68 15-57	70	195	3/4	914x850x1050			
CPMV 20 PM	0.7-0.85 1.0-1.05	20	15	11.8-42 11.5-35	25-88 24-74	69	215	1	1014x850x1200			
CPMV 25 PM	0.7-0.85 1.0-1.05	25	18.5	14.7-54 12.5-45	31-117 26-95	71	245	1	1014x850x1200			
CPMV 30 PM	0.7-0.85 1.0-1.05	30	22	19.3-69 18-57	41-145 38-120	70	335	1 1/2	1178x1050x1350			
CPMV 40 PM	0.7-0.85 1.0-1.05	40	30	27.3-95 24.2-80	58-201 51-170	73	370	1 1/2	1178x1050x1350			
CPMV 50 PM	0.7-0.85 1.0-1.05	50	37	37.8-116 34.6-93	80-247 73-198	71	495	1 1/2	1264x1197x1500			
CPVS 10 PM	0.7-1.3	100-190	10	7.5	3.3-20	7.0-42	70	230	320	3/4	1100x850x1080	1555x880x1080
CPVS 15 PM	0.7-1.3	100-190	15	11	5.3-30	11-64	70	231	346	3/4	1100x850x1080	1555x880x1080
CPVS 20 PM	0.7-1.3	100-190	20	15	6.6-36	14-77	70	241	356	3/4	1100x850x1080	1555x880x1080
CPVS 25 PM	0.7-1.3	100-190	25	18.5	10-57	21-120	70	313	/	1	1250x950x1180	/
CPVS 30 PM	0.7-1.3	100-190	30	22	12-64	25-135	74	321	470	1	1250x950x1180	1755x980x1180
CPVS 40 PM	0.7-1.3	100-190	40	30	22-94	47-199	75	412	/	1 1/2	1330x950x1200	/
CPVS 50 PM	0.7-1.3	100-190	50	37	32-107	68-226	73	413	597	1 1/2	1330x950x1200	1835x980x1200

* Unit performance measured according to ISO1217, Annex C, latest edition and ISO 2151

We protect your efficiency

Energy costs represent about 70% of the total operating cost of your compressor over a 5 year period. That's why reducing the operating cost of a compressed air solution is a major focus. Variable frequency driven compressors can cut the energy bill of your compressor by up to 35%.

- 12% Investment
- 3% Installation
- 8% Service
- 77% Energy consumption
- Air demand
- Variable frequency driven costs
- Load/Unload costs
- Savings





At Chicago Pneumatic we have a passion for performance and long-lasting partnerships. Since 1901, we have been committed to reliability based on technology and trust.



People. Passion. Performance.

For more information, please contact your CP partner:

Use only authorized parts. Any damage or malfunction caused by the use of unauthorized parts is not covered by Warranty or Product Liability.